

Summer New Items 2026

TRIX
H0



Heavy metal on rails



25476 Class 101 W:O:A® Electric Locomotive

Class 101 express locomotive with a special design for the Wacken Open Air (W:O:A®) music festival. The loco looks as it did in 2026.



This model can be found in the Märklin HO assortment under item number 39476.

Left Side



Right Side



44295 Refrigerator Car W:O:A® 2026

Refrigerator car with a special design for the 2026 Wacken Open Air music festival.

One-time series: The car is available exclusively from the Wacken Merchandise online store or from merchandise stores at the festival site.



Additional details and insights into this model can be found in the W:O:A® special brochure.

Left Side



Right Side



You can find all information, additional product photos, and a function overview at: <https://www.trix.de/products/25476>



The Lötschberg colossus is now available

The mighty
BLS class Ae 6/8
brings yet another cult
loco to your H0 layout

TRIX
H0



25680 Class Ae 6/8 Electric Locomotive

Completely new tooling



Scan the QR code to learn more about the model, technology, and features
www.trix.de/products/25680

For catenary operation, an additional long slipper is included for installation on the model

Prototypical with brake resistors in the machine room

Version with two pantographs, as it originally looked

märklin

This model can be found in the Märklin H0 assortment under item number 38680.

Cab and running gear lighting

Crossover plates on the ends

Featuring the rounded cabs from the second production run, the model is prototypically implemented with just one inductive magnet at locomotive end 2.



The ideal add-on from the Märklin assortment

46575 Freight Car Set for the Class Ae 6/8 –
Use the DC wheelset E700580 for the exchange



46575 (Märklin)

25680

Magical – Well-Designed – Elegant

The first unit left the factory in July of 1908. By 1911, Maffei delivered another 16 largely identical units in three production runs. In a departure from the first locomotives, 18 units (Series d and e, Maffei 1912/1913, road numbers 3624-3641) were equipped with driving wheels with a diameter of 2,000 mm / 78-3/4". This meant that the boiler on these units was also higher.



25435 Class S 3/6 Steam Locomotive, the "Hochhaxige" / "High Stepper"

Prototype: Bavarian type S 3/6 express steam locomotive with a type 2'2 T32.5 coal tender of the Royal Bavarian State Railways (K.Bay.Sts.B.). Subclass d, the "Hochhaxige" / "High Stepper" with 2,000 mm / 78-3/4" diameter driving wheels. Road number 3627. The loco looks as it did around 1912.

Scan the QR code to learn more about the model, technology, and features www.trix.de/products/25435

Detailed cab with digitally controllable cab lighting

Close coupler for short spacing between the loco and tender

With a built-in buffer capacitor

Smoke generator kit fitted as standard

Intricate running gear constructed of metal with a partially open bar frame

The front buffer height conforms to NEM specifications



märklin

This model can be found in the Märklin H0 assortment under item number 39435.



Length over the buffers
26.7 cm / 10-1/2"

Digital decoder with
26 sound and light functions

Striking, large drive wheels
(2,000 mm / 78-3/4" on the prototype)

Elegant white lamp designs

New collector's series – marking the start of a milestone in electric loco development



25772 Class EG 524 Electric Locomotive

Prototype: German National Railway (DRB) electric locomotive, road number EG 524 HALLE (later the class E 71.1). Brownish green basic paint scheme. Road number EG 524. The loco looks as it did starting in 1921.

This is the start of a 6-piece collector's series "History of Electric Locomotives from Eras I-VI"

- Extensive tooling changes to correctly implement a version from era I
- Especially intricate metal construction
- Many separately applied details
- The cab lighting can be controlled digitally
- Digital decoder with extensive operating and sound functions
- DCC, mfx- and RailCom-enabled
- A booklet about the history of the locomotive is included

Scan the QR code to learn more about the model, technology, and features
www.trix.de/products/25772

Prototypical design without windows on the assistant's side (right and left)

Oncoming train light

Die-cast nose sections

Type AEG form HSS roof-mounted pantographs with completely new tooling

märklin

This model can be found in the Märklin HO assortment under item number 39772.

Detailed representation of the buffer beam with older-design buffers, coupler hooks, and the upright brake hoses



With a built-in buffer capacitor

Length over buffers 13.3 cm / 5-1/4"

The buffer height conforms to NEM specifications



DB Cargo in international freight traffic



25265 Class 66 Diesel Locomotive

Prototype: Diesel-electric freight locomotive JT42CWR, better known as the class 66. DB Cargo diesel locomotive. The loco looks as it did in 2025.



Scan the QR code to learn more about the model, technology, and features
www.trix.de/products/25265



Uncoupler aid is replicated

As part of DB Cargo's Region West, DB Cargo UK is owned by the German Railroad (DB AG) group and is the largest rail freight operator in Great Britain.

Based in Doncaster, England, it operates comprehensive freight, infrastructure, and charter train services in Great Britain and through the Eurotunnel. The company operates hundreds of locomotives and cars and focuses on green logistics, which includes transporting steel and intermodal services.

Length over the buffers approx. 24.7 cm / 9-3/4".

With built-in buffer capacitor and 25 light and sound functions

With dynamic smoke exhaust

Rear-view mirrors are replicated

Cab and control panel lighting can be controlled digitally

4 axles powered through cardan shafts

Detailed execution of the trucks



märklin

This model can be found in the Märklin H0 assortment under item number 39076.

Leonhard's latest

Exclusively from Märklin and Trix



25985 Class 2019 Dual Power Locomotive

Prototype: Class 2019 dual power locomotive (Stadler Euro9000) of the European Loc Pool AG (ELP), leased to Leonhard Weiss GmbH & Co. KG, Göppingen. Gray/yellow basic paint scheme. Road number 2019 310-2. The loco looks as it did starting in March 2026.

Completely new tooling with highly detailed metal construction



Scan the QR code to learn more about the model, technology, and features
www.trix.de/products/25985

For the first time, all four pantographs can be separately raised and lowered in digital operation

Highly detailed roof design with powered fan wheels

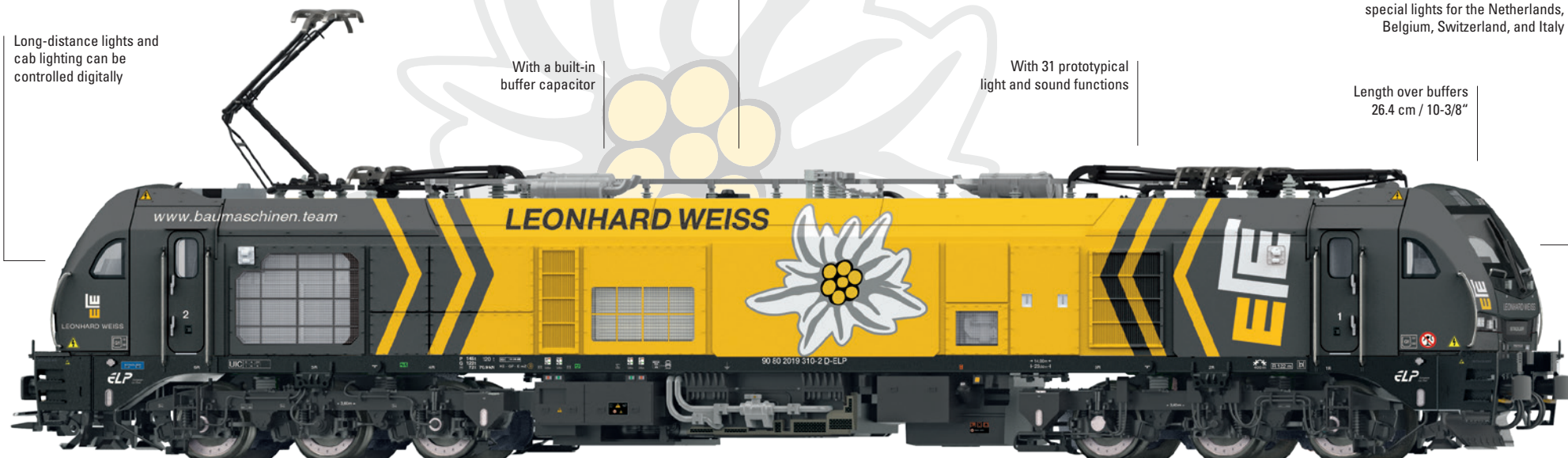
Controllable switching lights and special lights for the Netherlands, Belgium, Switzerland, and Italy

Long-distance lights and cab lighting can be controlled digitally

With a built-in buffer capacitor

With 31 prototypical light and sound functions

Length over buffers 26.4 cm / 10-3/8"



The buffer height conforms to NEM specifications and the coupling area lighting can be controlled digitally

Many separately applied details

märklin
 This model can be found in the Märklin H0 assortment under item number 38905.



© Märklin

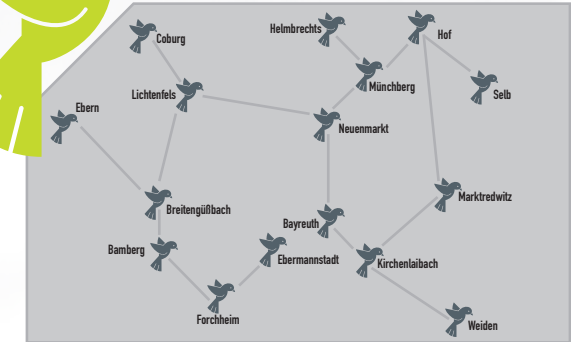
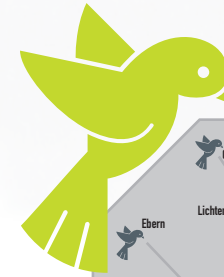
The perfect starting point!



25968 Class 650 Regio Shuttle RS1 Diesel-Powered Rail Car

Prototype: Type Regio Shuttle RS1 diesel-powered rail car operated by agilis Eisenbahngesellschaft as the class 650. Version with screw coupler, buffers, and train destination signs mounted below. Gray basic paint scheme. Road number 650 701-5. The rail car looks as it did starting in 2024.

An attractive introduction to the model railroad hobby



Multiple vehicles can be coupled together using the coupling rod provided

Factory-installed LED interior lighting

With an mfx/DCC digital decoder and 17 digital functions

The model has many separately applied details

Length over the buffers 29.3 cm / 11-1/2"



The buffer height conforms to NEM specifications

Additional variations of the Regio Shuttle with different versions of the ends can be found in the Trix H0 range.



Scan the QR code to learn more about the model, technology, and features www.trix.de/products/25968

märklin

This model can be found in the Märklin H0 assortment under item number 36968.

“Katja” in a new “old” guise



The Württemberg Railroad Company (WEG) opened its first line between Nürtingen and Neuffen 125 years ago.

With its “Katja” featuring a retro look on one side, the WEG is now recalling bygone days.



25971 Class 650 Regio Shuttle RS1 Diesel-Powered Rail Car

Prototype: Type Regio Shuttle RS1 diesel-powered rail car operated by the Württemberg Railroad Company (WEG) as the class 650. Version with a screw coupler, buffers, and an overhead train destination sign. Light gray/ultramarine blue basic paint scheme with a special design for the 125th anniversary of the “Talesbahn” or Valley’s Railroad. Road number VT 442 (NVR no. 95 80 0 650 690-0 D-WEG). The loco looks as it did starting in 2025.

**An attractive introduction to the model railroad hobby
WEG Regio shuttle featuring a historic design**

TRIX
HO

- Nürtingen
- Nürtingen, Vorstadt
- Nürtingen, Roßdorf
- Frickenhausen
- Frickenhausen, Kelterstr.
- Linsenhofen
- Neuffen



Factory-installed LED interior lighting

With an mfx/DCC digital decoder and 17 digital functions

Multiple vehicles can be coupled together using the coupling rod provided

Many separately applied details and a special design for the 125th anniversary of the “Talesbahn” or Valley’s Railroad

Length over the buffers 29.3 cm / 11-1/2”

The buffer height conforms to NEM specifications

Additional variations of the Regio Shuttle with different versions of the ends can be found in the Trix HO range.



Scan the QR code to learn more about the model, technology, and features
www.trix.de/products/25971

märklin

This model can be found in the Märklin HO assortment under item number 36971.

Crimson G2000



22824 Class 272 (G2000) Diesel Locomotive

Prototype: Cargo Logistik Rail Service GmbH, Barleben, Germany, (CLR) class 272 (Vossloh G2000 BB) heavy diesel locomotive with symmetrical cabs. Crimson basic color scheme. Road number 272 204-9. The loco looks as it did starting in 2024.

*Used throughout Germany
for hauling freight
and construction trains*

märklin

This model can be found in the Märklin H0 assortment under item number 37094.



Scan the QR code to learn more about the model, technology, and features
www.trix.de/products/22824

With a built-in buffer capacitor and measuring approximately 20 cm / 7-7/8" over the buffers

Air-conditioning units on the roof are prototypically printed

Roof ventilators designed as separate assemblies and replicated in detail

Subtle weathering effects on the roof give the model a realistic appearance

Featuring an attractive design in the company colors of the CLR

Digitally controllable cab lighting and controllable switching lights and special lights for Belgium



Digital decoder with 21 operating and sound functions

Frame and parts of the body made of metal





25513 Class Be 4/6 Electric Locomotive

Prototype: Swiss Federal Railways (SBB) class Be 4/6 electric locomotive. Rebuilt version as it looked until withdrawn from service. Fir green basic paint scheme with gray running gear. With sleeve-style buffers. the cab side and end doors are partially welded shut and are without crossover plates. With a sanding system, locomotive running authorization light, and Integra-Signum inductive magnets. Cooling pipes on the loco sides with 11 vertical mountings. Locomotive road number 12323. The loco looks as it did during the early 1970s.

Highly detailed metal construction and 24 digital functions



Scan the QR code to learn more about the model, technology, and features
www.trix.de/products/25513

The cabs and machine room have interior details with digitally controllable lighting

An additional red oncoming train light can be controlled digitally

Length over the buffers
 18.9 cm / 7-1/2"

For operation with the catenary wire, longer slippers are included separately



With a built-in buffer capacitor

Prototypical tooling changes, such as side and end cab doors that are partially welded shut

Modified version with 11 cooling pipe mountings



märklin

This model can be found in the Märklin H0 assortment under item number 39513.



25092 Class 1189 Electric Locomotive

Prototype: Class 1189 "Austrian Crocodile" Electric Locomotive (ÖBB).
Version in fir green basic paint scheme. Road number 1189.08.
The loco looks as it did during the mid/late 1970s.



W. Sieberg, Eisenbahnstiftung



Scan the QR code to learn more about the model, technology, and features
www.trix.de/products/25092

With many separately applied components

Digital decoder with 24 operating and sound functions

The cab lighting and machine room lighting are digitally controllable

The model has detailed roof fittings

Triple headlights



Length over buffers approx. 23.4 cm / 9-1/4"

New loco road number 1189.08

With prototypical side-rod drive

märklin
This model can be found in the Märklin HO assortment under item number 39092.



25983 Berkshire 2-8-4 Steam Locomotive

Prototype: Southern Pacific “Berkshire” steam locomotive with the 2-8-4 wheel arrangement. Deep black basic paint scheme. Road number 3505. The loco looks as it did between 1945 and 1950. One of 25 locomotives built with the striking Coffin feed-water heater.

Completely new tooling

With a built-in buffer capacitor and 29 digital functions

Length approx. 31.3 cm / 12-5/16”

Factory-installed smoke generator with speed-dependent, dynamic smoke exhaust.



Scan the QR code to learn more about the model, technology, and features
www.trix.de/products/25983

The highly detailed front is fully equipped with lamps, illuminated number displays, and the bell. The surface feed-water heater above the smokebox door is another striking feature



24915 Southern Pacific freight car set

Set consisting of five US freight cars of different types from the Southern Pacific. Three single-door boxcars, one stockcar (livestock car), and one tank car. Operating condition around 1948. Total length over couplers approximately 76 cm. AC wheel set: E320551. DC wheel set E320389 (RP 25).

Boxcars and stake car with opening sliding doors

Additional details and insights for this model can be found in the special brochure



A supplementary US freight car set with five additional cars and a matching caboose can be found in the Märklin H0 range under item numbers 45667 and 45707, with a note on the required replacement wheel sets.

More New Items

Use these car models everywhere –
with Märklin wheels for Märklin track,
with Trix wheels for Trix track.



46592 Type G1 22 Boxcar –
Use the DC wheelset E700580 for the exchange



45707 Southern Pacific Caboose –
Use the DC wheelset E320552 (NEM) or E320389 (RP25)



45667 Southern Pacific freight car set – Use the DC wheelset E320552 (NEM) or E320389 (RP25)



46563 Stake Car Set 1 Loaded with Steel Pipes –
Use the DC wheelset E700580 for the exchange



46853 "Sputnik" Caboose –
Use the DC wheelset E700580 for the exchange



46569 Stake Car Set 2 Loaded with Steel Pipes –
Use the DC wheelset E700580 for the exchange



46909 Märklin Catalog Car for 1938 –
Use the DC wheelset E32376004 for the exchange



48426 HO Christmas Car for 2026 –
Use the DC wheelset E700580 for the exchange



47432 Type Laads 800B Pair of Flat Cars –
Use the DC wheelset E414237 for the exchange



Come, see, be amazed:

Märklin opens its doors. Experience the production with all of its facets and many other attractions.

There is something offered for the entire family – **We look forward to your visit!**

Mark your calendar now!

Current program information: www.maerklin.de



märklin

Open House Day

Admission into the factory from 9:00 AM - 3:00 PM

Current program information: www.maerklin.de

September 18 and 19, 2026 in Göppingen



Detailed information about the hours of operation and entrance guidelines for the Märklineseum on this weekend can be found in the current program information.

TRIX

Gebr. Märklin & Cie. GmbH
Stuttgarter Straße 55-57
73033 Göppingen
Germany

www.trix.de

Service:
Telephone: 650-569-1318
E-mail: digital@maerklin.com

We reserve the right to make changes and delivery is not guaranteed. Pricing, data, and measurements may vary. We are not liable for mistakes and printing errors.

Prices are current as of the print date for this catalog – we reserve the right to change prices between years – prices are in effect until the release of the next price list / next catalog.

Some of the images are hand samples, retouched images, and renderings. The regular production models may vary in details from the models shown. Märklin reserves the right to cancel announced new items in the event of insufficient demand.

If these edition of the presentation book does not have prices, please ask your authorized dealers for the current price list.

All rights reserved. Copying in whole or part prohibited.

© Copyright by Gebr. Märklin & Cie. GmbH. Printed in Germany.

435 106 – 05 2026

A current explanation of the pictograms can be found in the current Trix main catalog or on the Internet at www.trix.de for a product in question. You do this by going across the symbol field with your mouse.



Important Note!

The products shown in this brochure/catalog are high quality collector and model railroad items with a recommended age of 15 years and older. We recommend our Märklin Start up assortment for children aged 6 years and above. This is not suitable for children under the age of three years.



Märklin fulfills the requirements for a quality management system according to the ISO 9001 Standard. This is regularly checked and certified by the TÜV Süd testing organization. You thereby have the assurance of buying a quality product of a certified firm.



Visit us:
www.facebook.com/trix